

“GIOVE” SYSTEM

SYSTEM TYPE:
HIDDEN ANCHORING

TYPES OF CLADDING TILES:

- Ceramic tiles, simple or multi-layer;
- Laminate tiles;
- Fibercement tiles;
- Natural stone tiles;
- Other materials that can be worked on the backside.

WORKINGS ON TILE:
small holes on the backside

SYSTEM COMPONENTS:

“Giove” system is made of the following components:

- extruded profile, “CV1m” in aluminium alloy, EN 6060 T5 (or similar, when needed);
- extruded profile, “G1” in aluminium alloy, EN 6060 T5;
- tile retaining hooks, “G2”, obtained from extruded aluminium alloy, EN 6060 T5;
- horizontal rail retaining hooks, “CD4c” in stainless steel EN 1.4310 (AISI 304);
- retaining springs, type “V7”, in stainless steel EN 1.4310 (AISI 304);
- standard fixing brackets, simple bracket “A13” and double bracket “B13” in aluminium alloy, EN 6060 T5;
- nuts and bolts in stainless steel, class A2;
- anchor bars, mechanical or epoxy-resin based, when needed;
- tile fixing device, placed on the backside of the tile, in the appropriately made holes, in stainless steel, class A2;

SYSTEM DESCRIPTION:

This system is based on the aluminium sub-frame made out of vertical rails “CV1m”, placed on design pace and horizontal rails “G1”, placed on design pace, which depend on the dimensions of the tiles.

The “CV1m” profile is designed and shaped in order to fit without drillings the following components:

- standard fixing brackets, simple bracket “A13” and double bracket “B13”, placed on design pace;
- two hooks “CD4c” and two retaining springs “V7”, in order to fix and retain horizontal rail “G1”;

The “G1” profile is designed and shaped in order to fit without drillings the “G2” hook designed to retain the cladding tiles.

Total absence of the holes on vertical and horizontal rails protects coating (oxidation or painting) from corrosion and assure to the structure a longer lifetime.

The main characteristic of “Giove” system is that entire tile anchoring and supporting mechanism is hidden and not visible. This is assured using appropriate number of anchoring devices placed on the backside of the tile. The number of devices can vary and depend on the real dimensions of cladding tiles and effective design loads. They are placed near top and bottom edges of each tile.

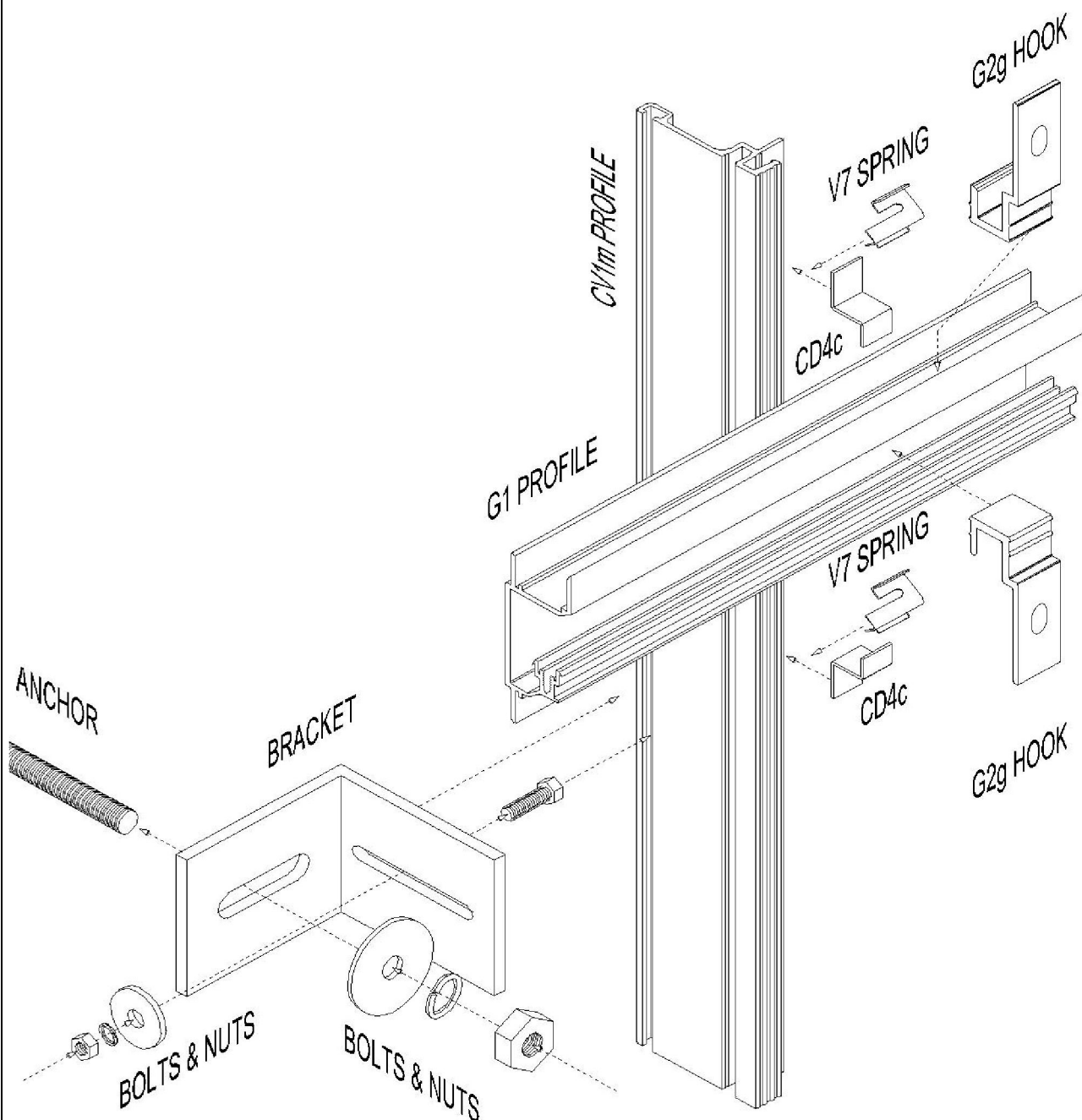
On the backside of each tile small holes are made; in these holes is placed mechanical insert-screw, able to resist to the pull-out loads, and it allow the anchoring of the “G2” hooks. In this way these hooks are solidly united with the tile and the tile can be placed and hooked-on to the horizontal rail profile “G1”. When the supporting sub-frame is placed and assembled, each cladding tile can be placed, set-up and displaced singularly.

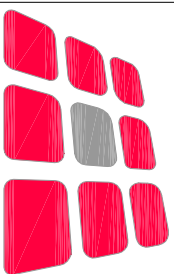
The supporting sub-frame allow any type of horizontal and vertical regulations and the thermal expansion off all components.

SYSTEM SIZE AND DIMENSIONS:

- The standard distance between the wall and the internal face of the tile is 140 mm, with a standard regulation of ± 25 mm.
- The standard thickness of the tiles for this system should be approximately $8 \div 20$ mm.

NOTE: THE EFFECTIVE COMPONENTS CAN BE CHANGED DURING THE DESIGN PHASE





DALLERA

Tecnologie S.r.l.

Società unipersonale

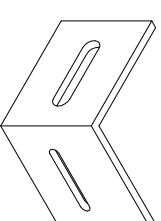
Via Trivulzina, 13/48 - Pad. 20 - 20864 Agrate Brianza (MB)

Tel. 039 9711592 - Fax 039 9711593

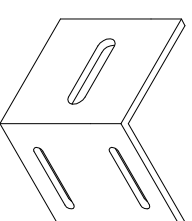
www.dalleratecnologie.com info@dalleratecnologie.com

"GIOVE" SYSTEM

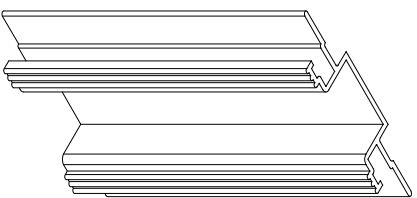
STANDARD COMPONENTS



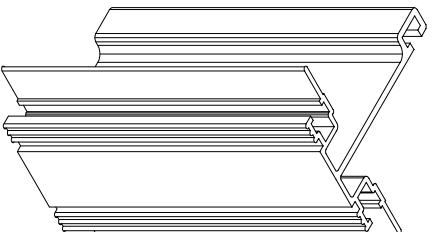
SINGLE
BRACKET



DOUBLE
BRACKET



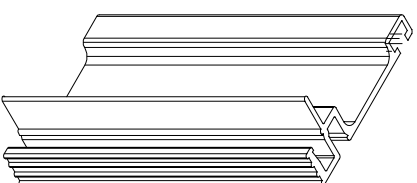
CV1r



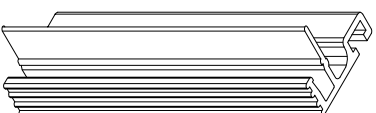
CV1



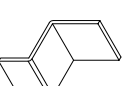
CV1a



CV1m



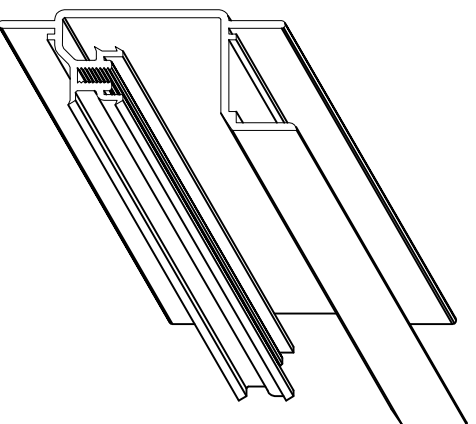
CV1bm



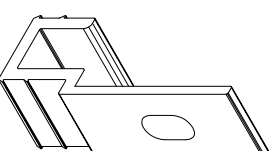
CD4c HOOK



V7 SPRING



G1 PROFILE



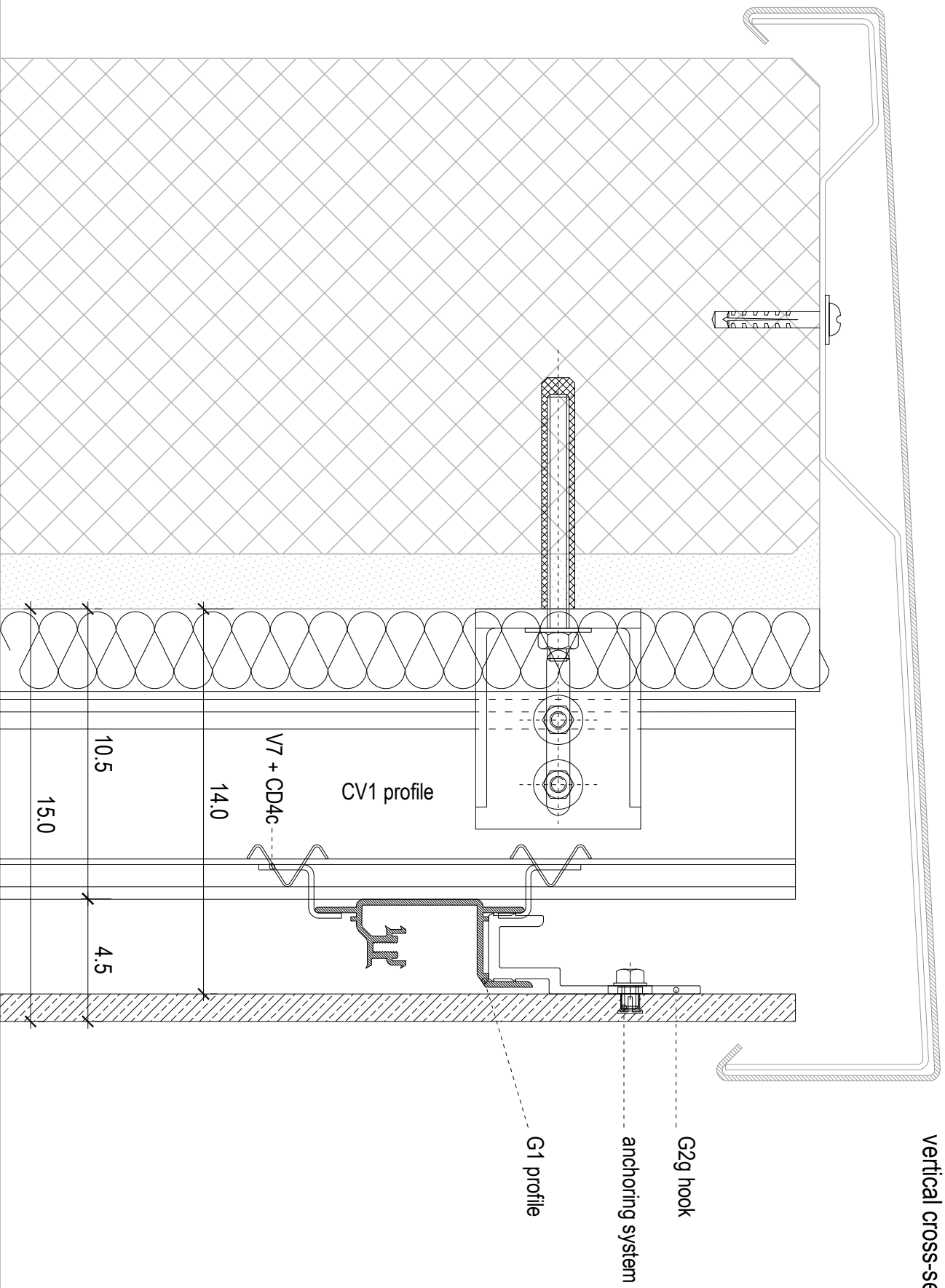
G2g HOOK

TOP TIN-PLATE

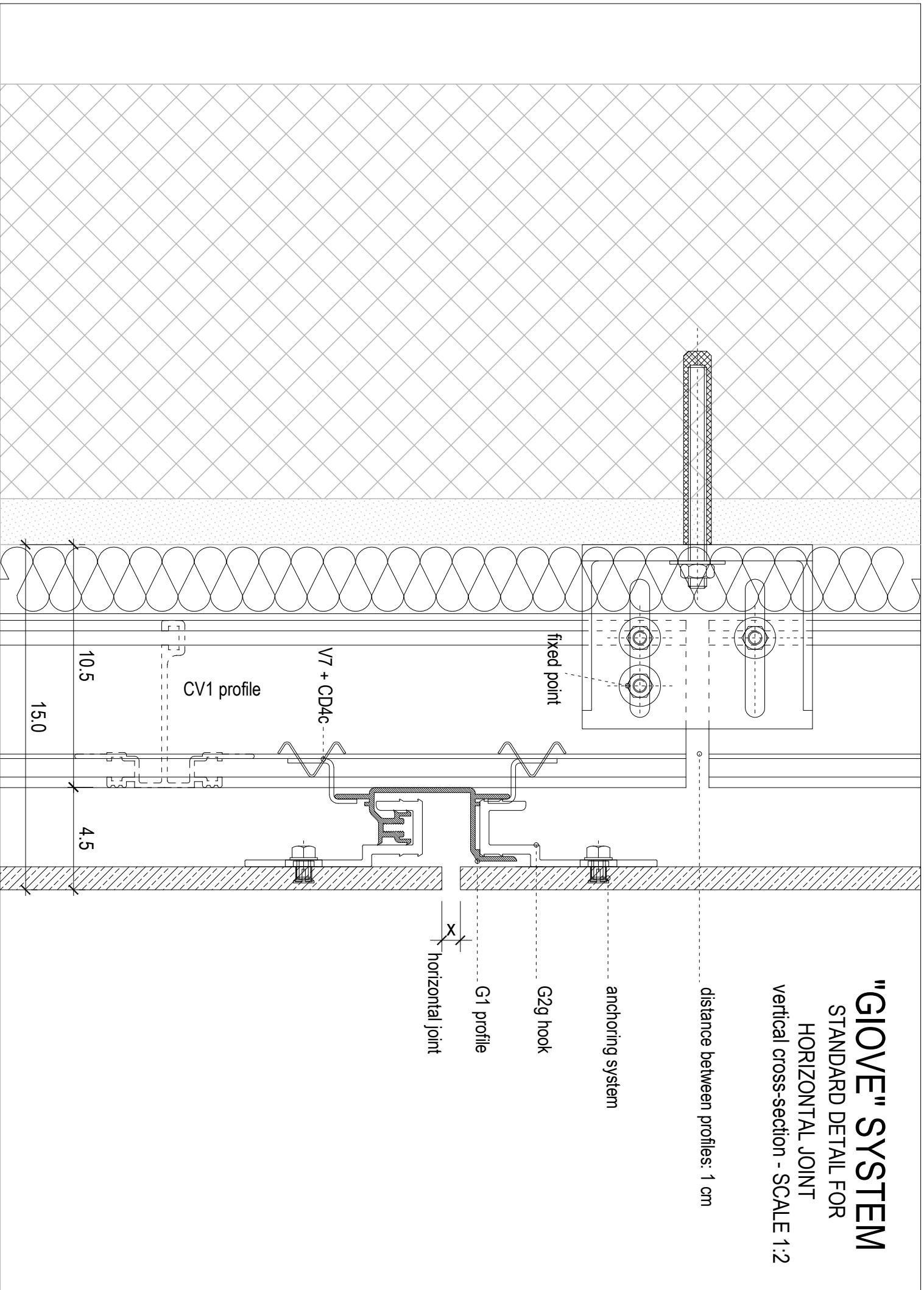
"GIOVE" SYSTEM

STANDARD DETAIL FOR
FACADE TOP

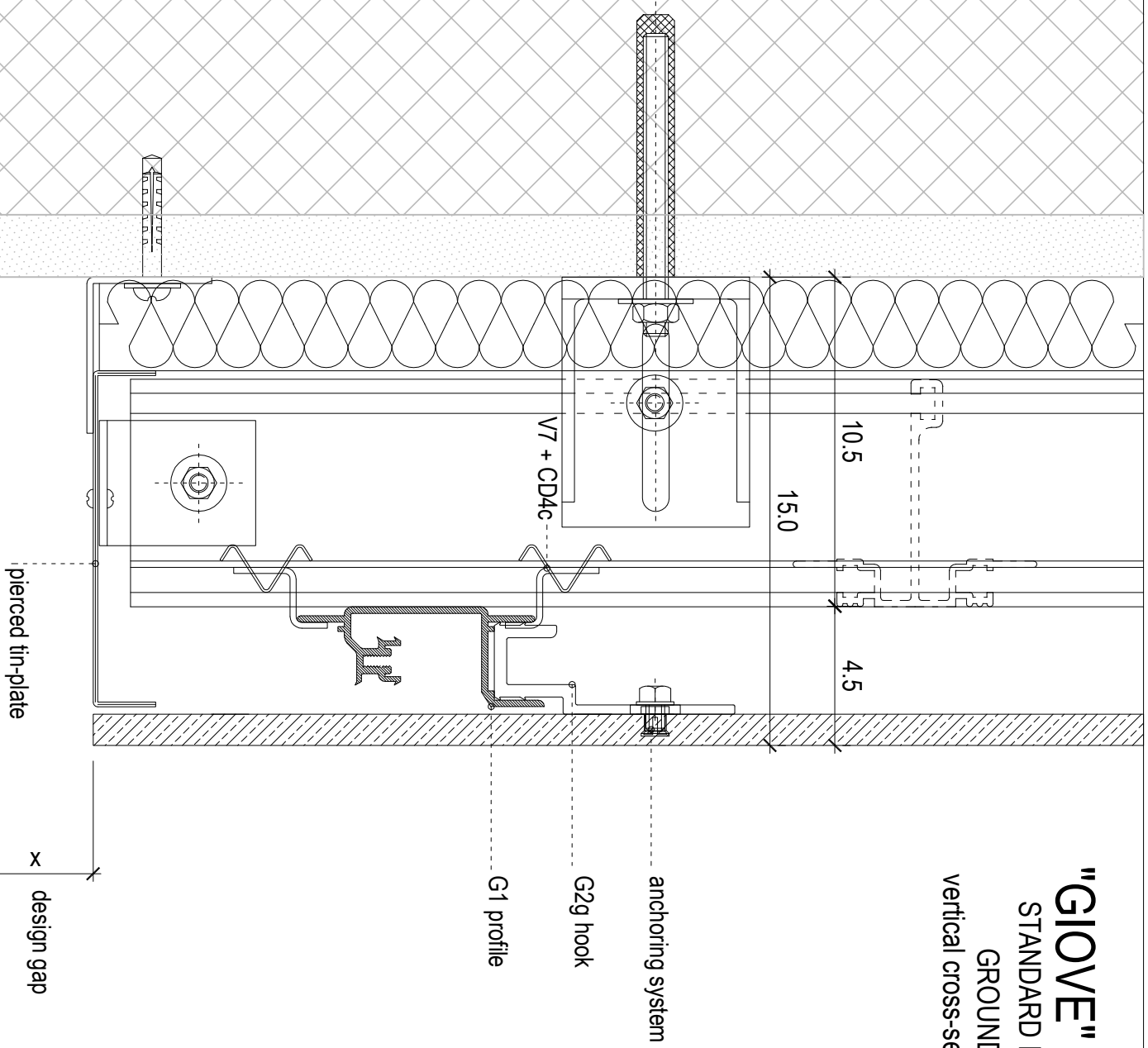
vertical cross-section - SCALE 1:2



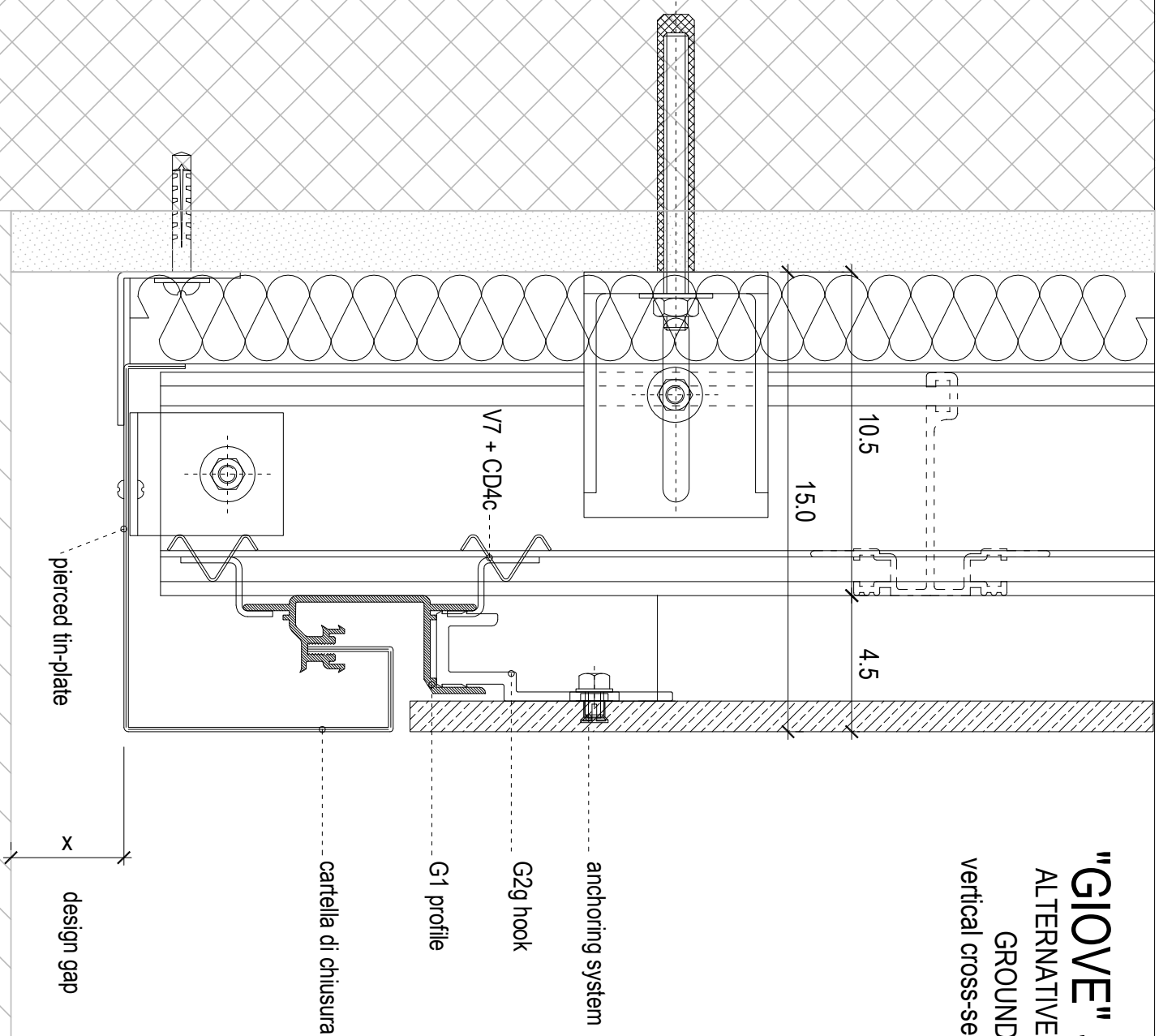
"GIOVE" SYSTEM
STANDARD DETAIL FOR
HORIZONTAL JOINT
vertical cross-section - SCALE 1:2



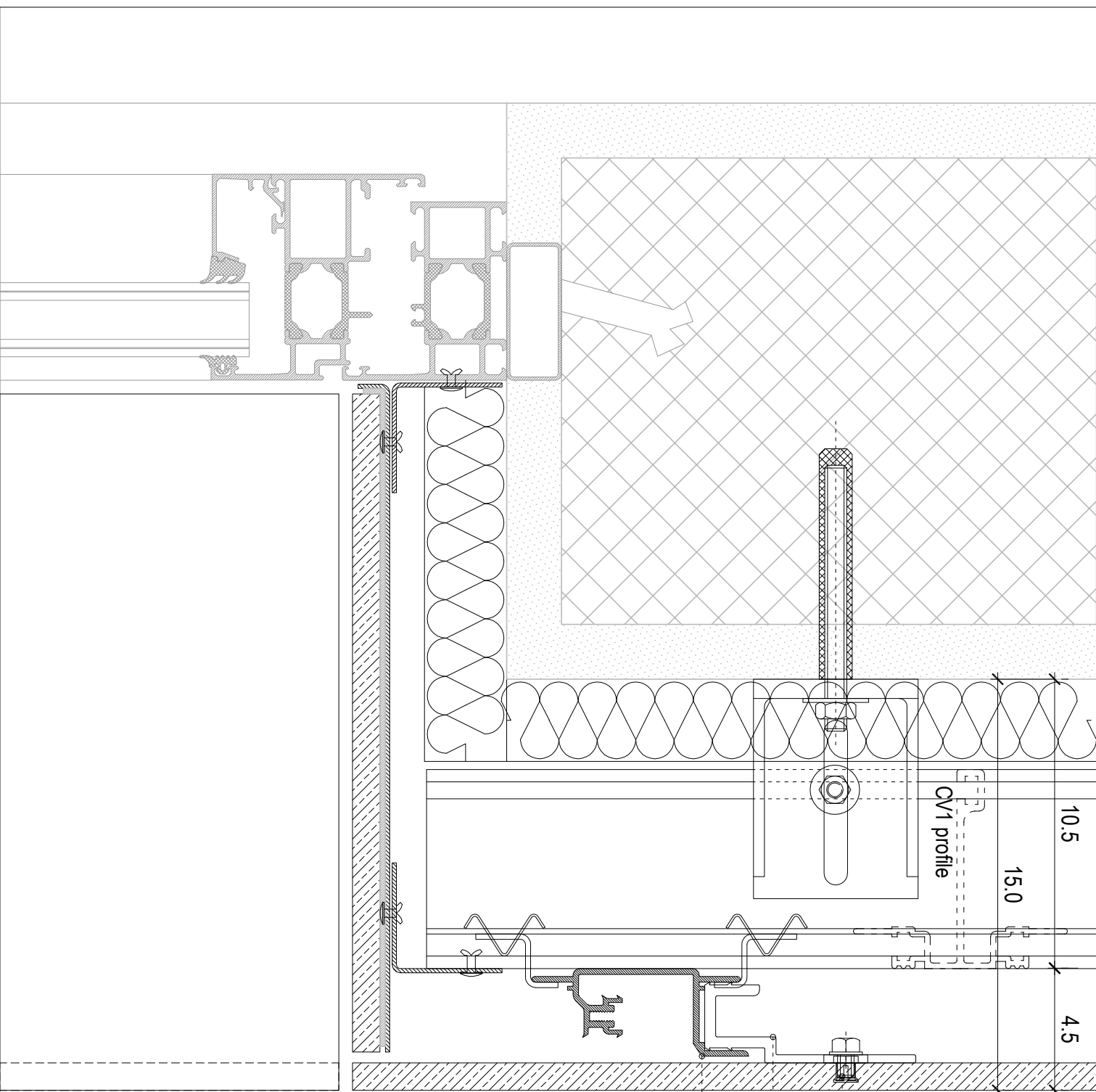
"GIOVE" SYSTEM
STANDARD DETAIL FOR
GROUND LEVEL
vertical cross-section - SCALE 1:2



"GIOVE" SYSTEM
ALTERNATIVE DETAIL FOR
GROUND LEVEL
vertical cross-section - SCALE 1:2



"GIOVE" SYSTEM
STANDARD DETAIL FOR
WINDOW INTRADOS
vertical cross-section - SCALE 1:2

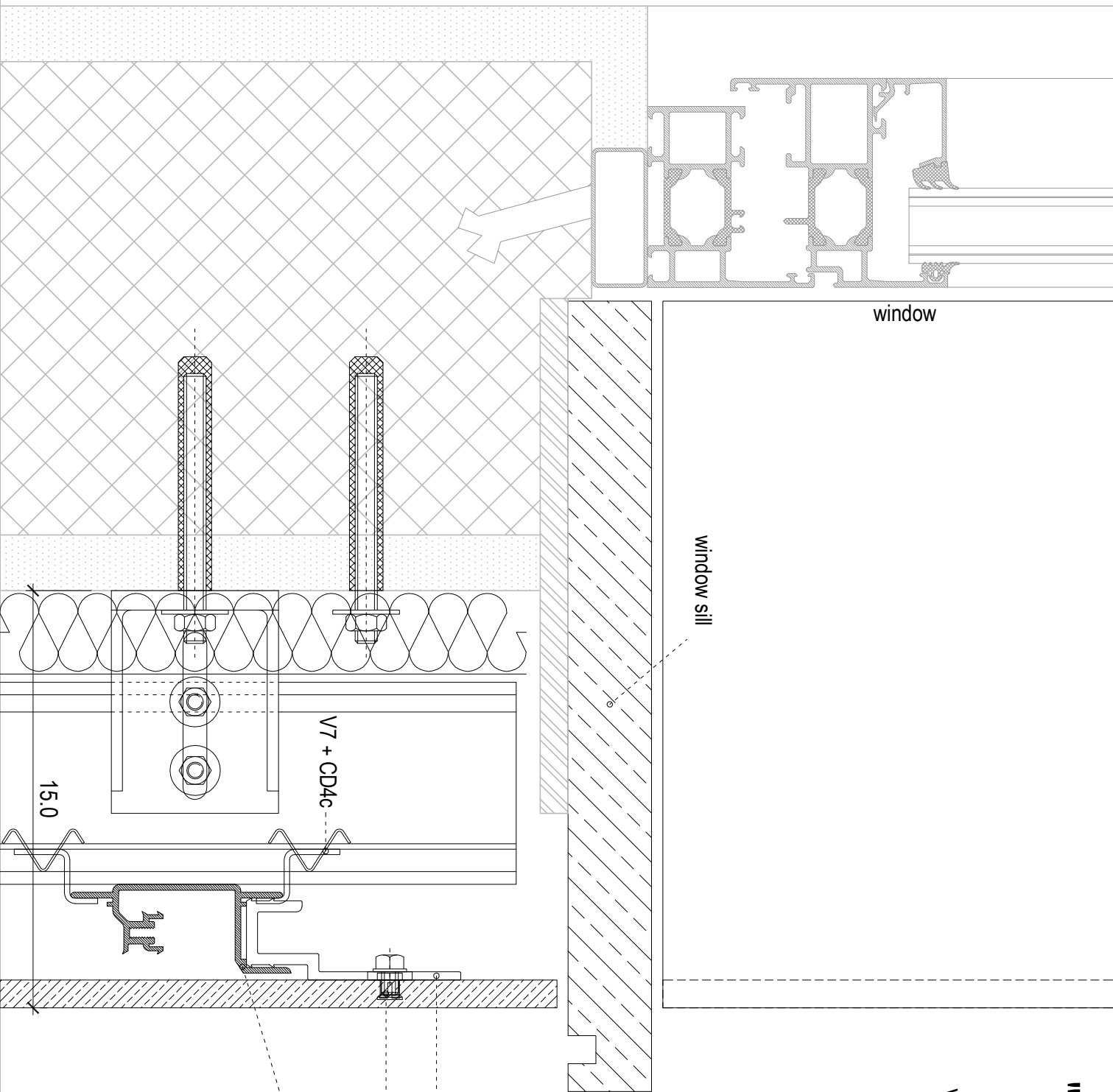


anchoring system

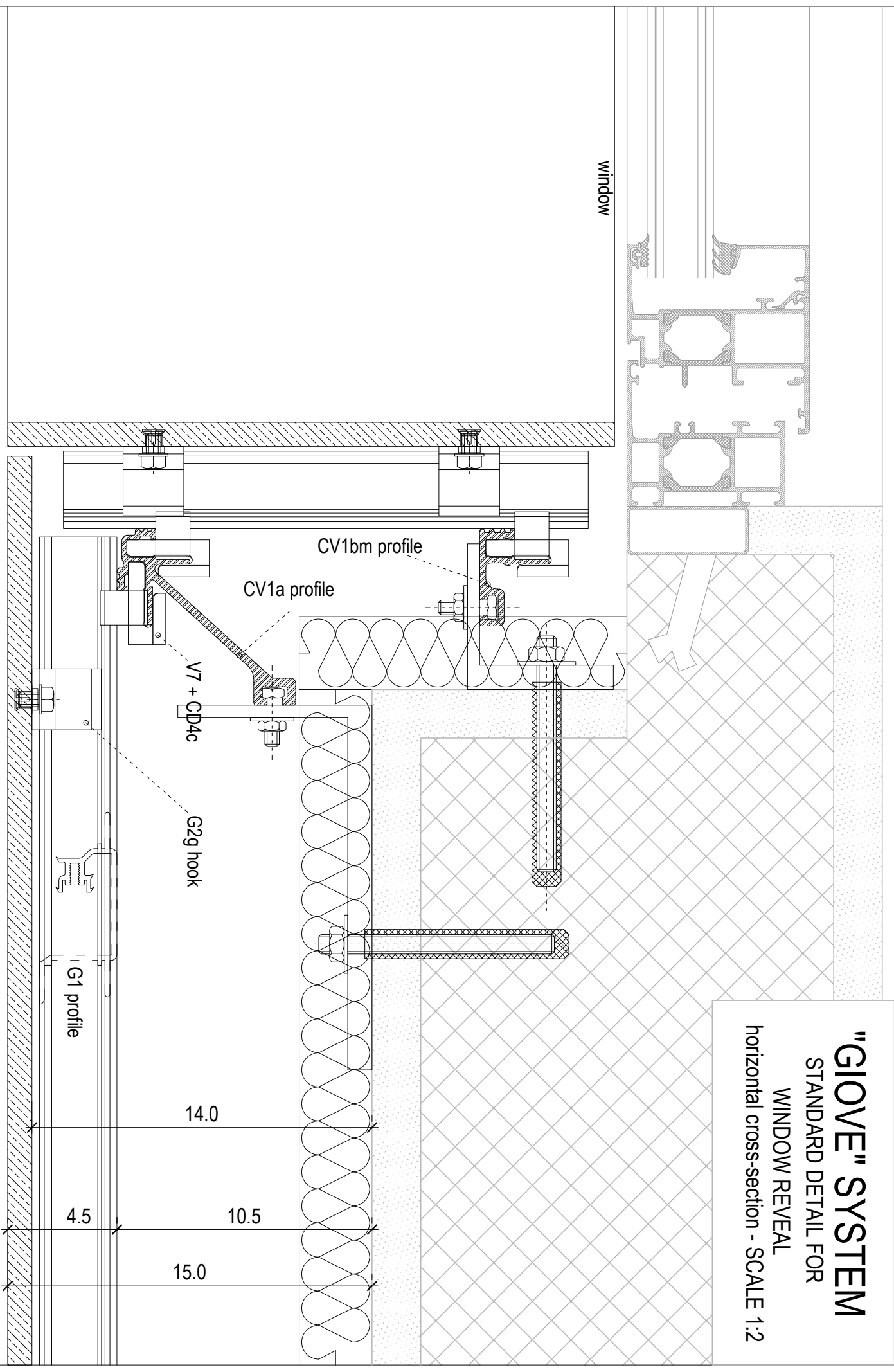
G2g hook

G1 profile

"GIOVE" SYSTEM
STANDARD DETAIL FOR
WINDOWSILL
vertical cross-section - SCALE 1:2



"GIOVE" SYSTEM
STANDARD DETAIL FOR
WINDOW REVEAL
horizontal cross-section - SCALE 1:2



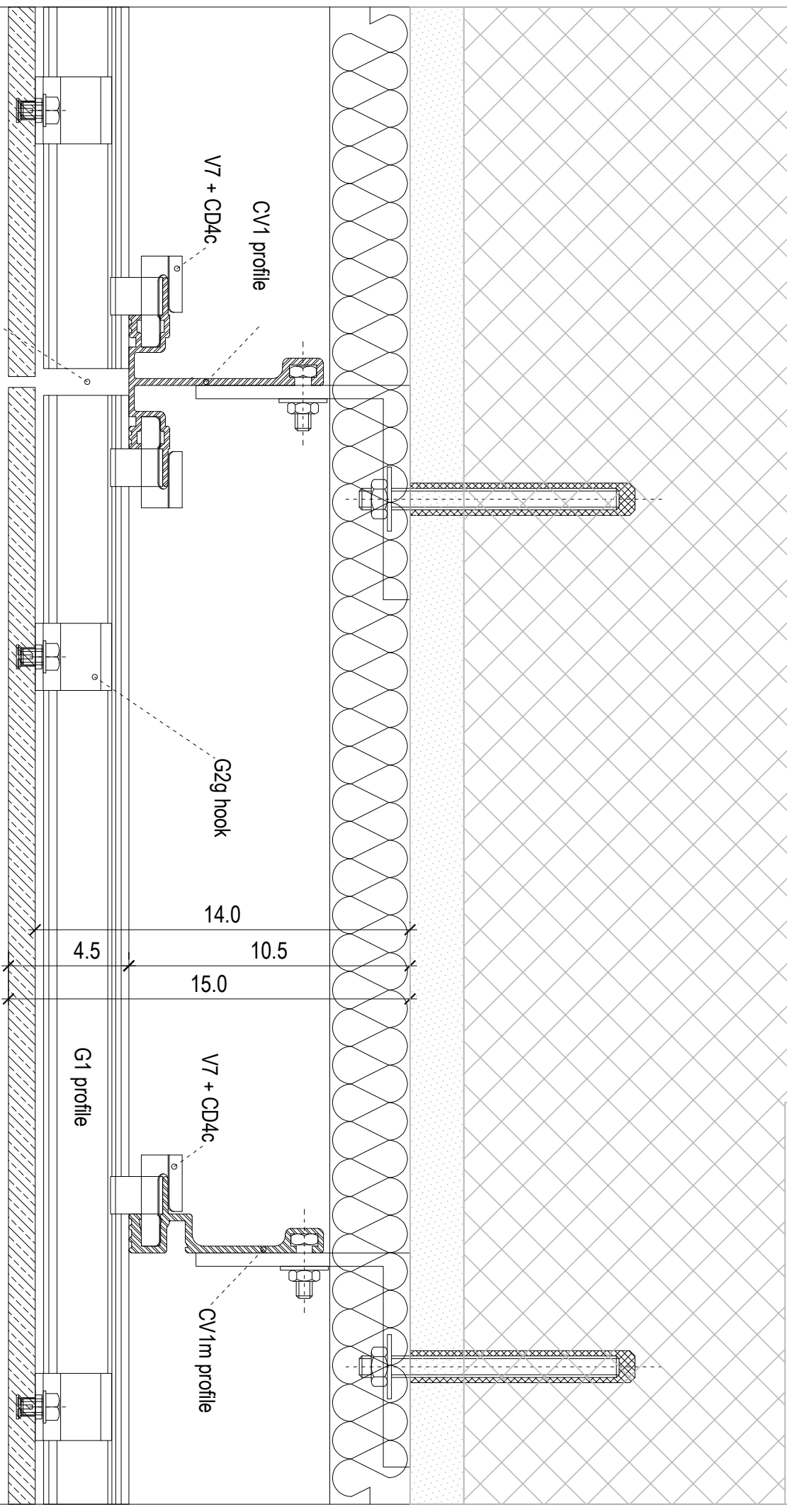
"GIOVE" SYSTEM

STANDARD DETAIL

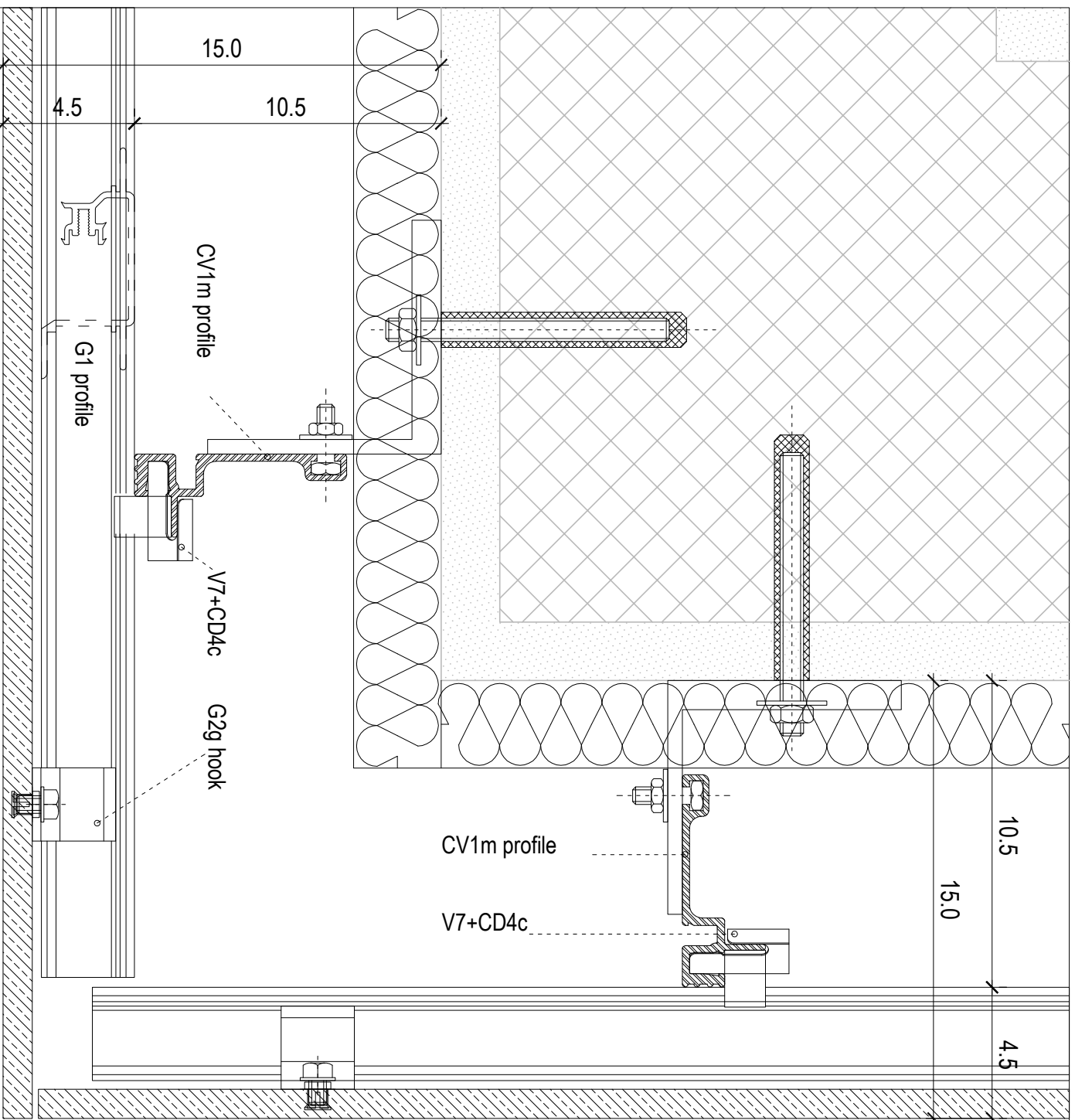
horizontal cross-section - SCALE 1:2

distance between profiles: 1 cm

horizontal joint



"GIOVE" SYSTEM
STANDARD DETAIL FOR
EXTERNAL CORNER
horizontal cross-section - SCALE 1:2



STANDARD DETAIL FOR INTERNAL CORNER horizontal cross-section - SCALE 1:2

STANDARD DETAIL FOR

INTERNAL CORNER

horizontal cross-section - SCALE 1:2

